



One Earth Solar Farm

Volume 6.0 Environmental Statement [EN010159]

Volume 3

Figure 9.1: Study Area

Figure 9.2: Prehistoric Receptors

Figure 9.3: Roman Receptors

Figure 9.4: Saxon and Medieval Receptors

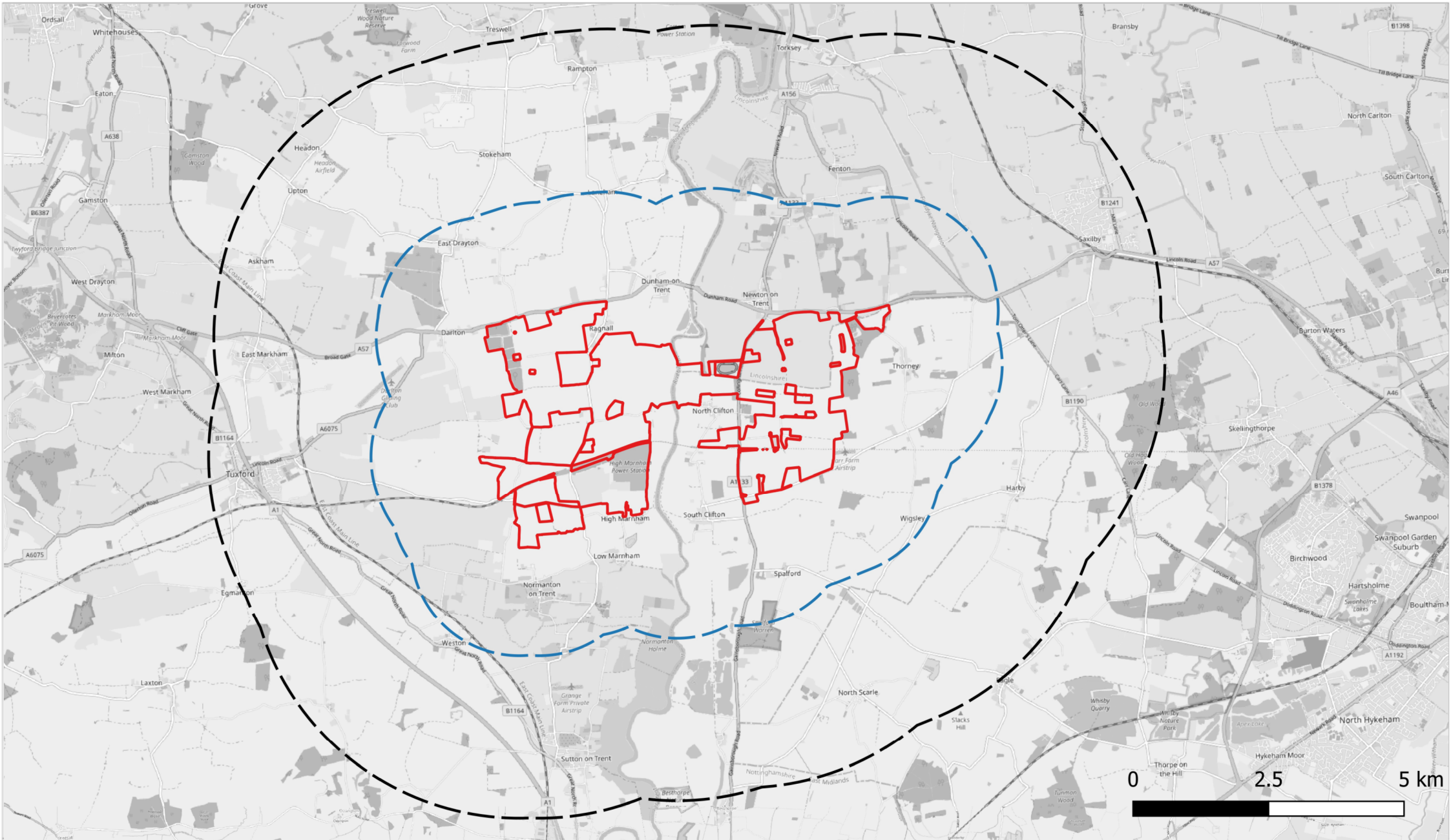
Figure 9.5: Post-Medieval and Undated Receptors

February 2025

Document Reference: EN010159/APP/6.20

Revision 01

Infrastructure Planning (Applications: Prescribed Forms and Procedure) Regulations 2009
- Reg 5 (2) (a)



Client:
One Earth Solar Farm Ltd

Project:
One Earth Solar Farm

Planning Inspectorate Scheme Ref: EN010159
Environmental Statement Volume 2

Drawing Title:
Figure 9.1: Study Areas

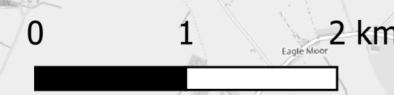
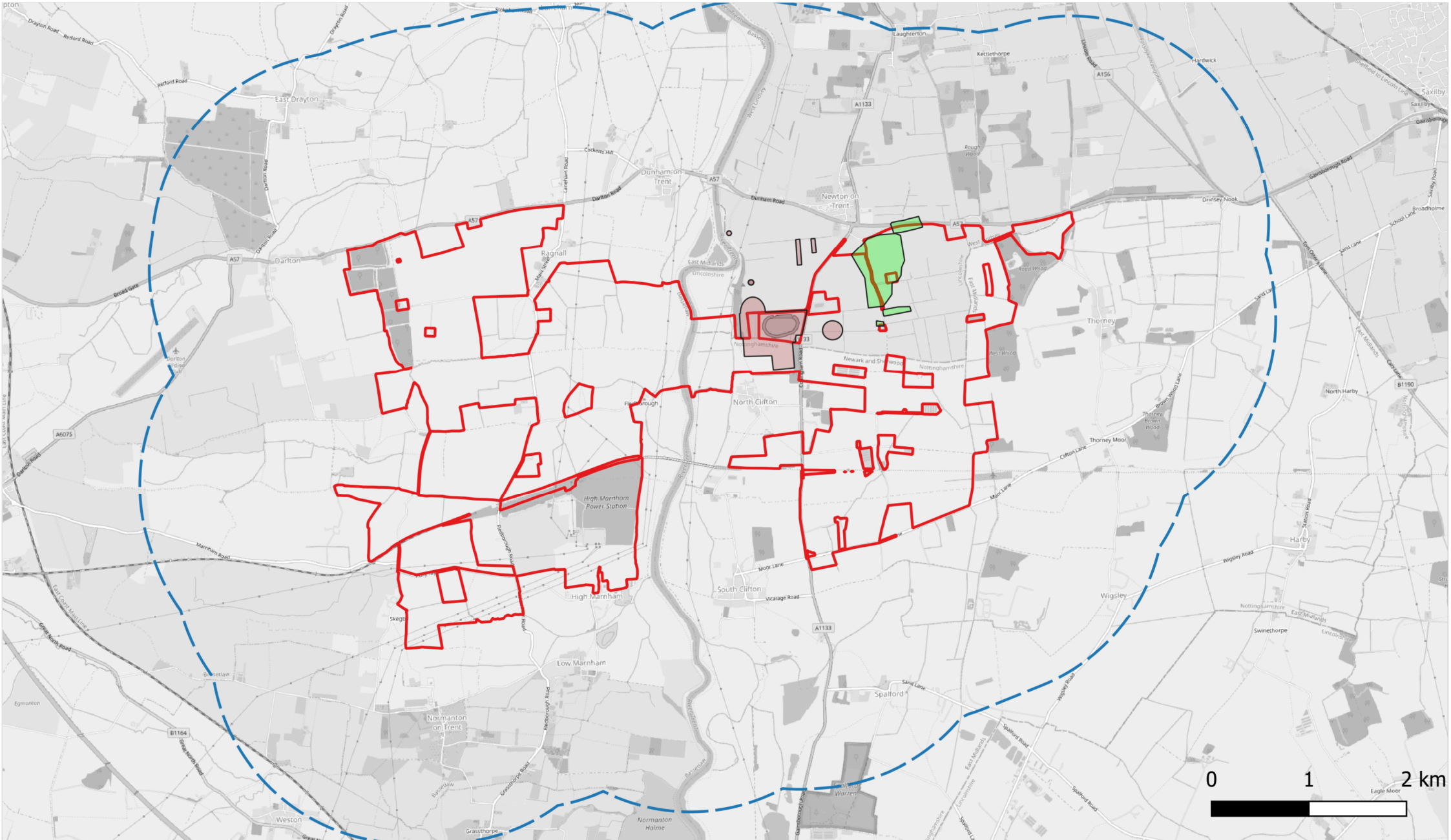
Drawing Number:
EN010159/APP/6.20/9.1

Drawn Date:
2025-02-26

Rev:
01

Legend:

- Order Limits
- 2km Study Area for NDHA
- 5km Study Area for DHA



Client:
One Earth Solar Farm Ltd

Project:
One Earth Solar Farm

Planning Inspectorate Scheme Ref:EN010159

Environmental Statement Volume 2

Drawing Title:
Figure 9.2: Prehistoric Receptors

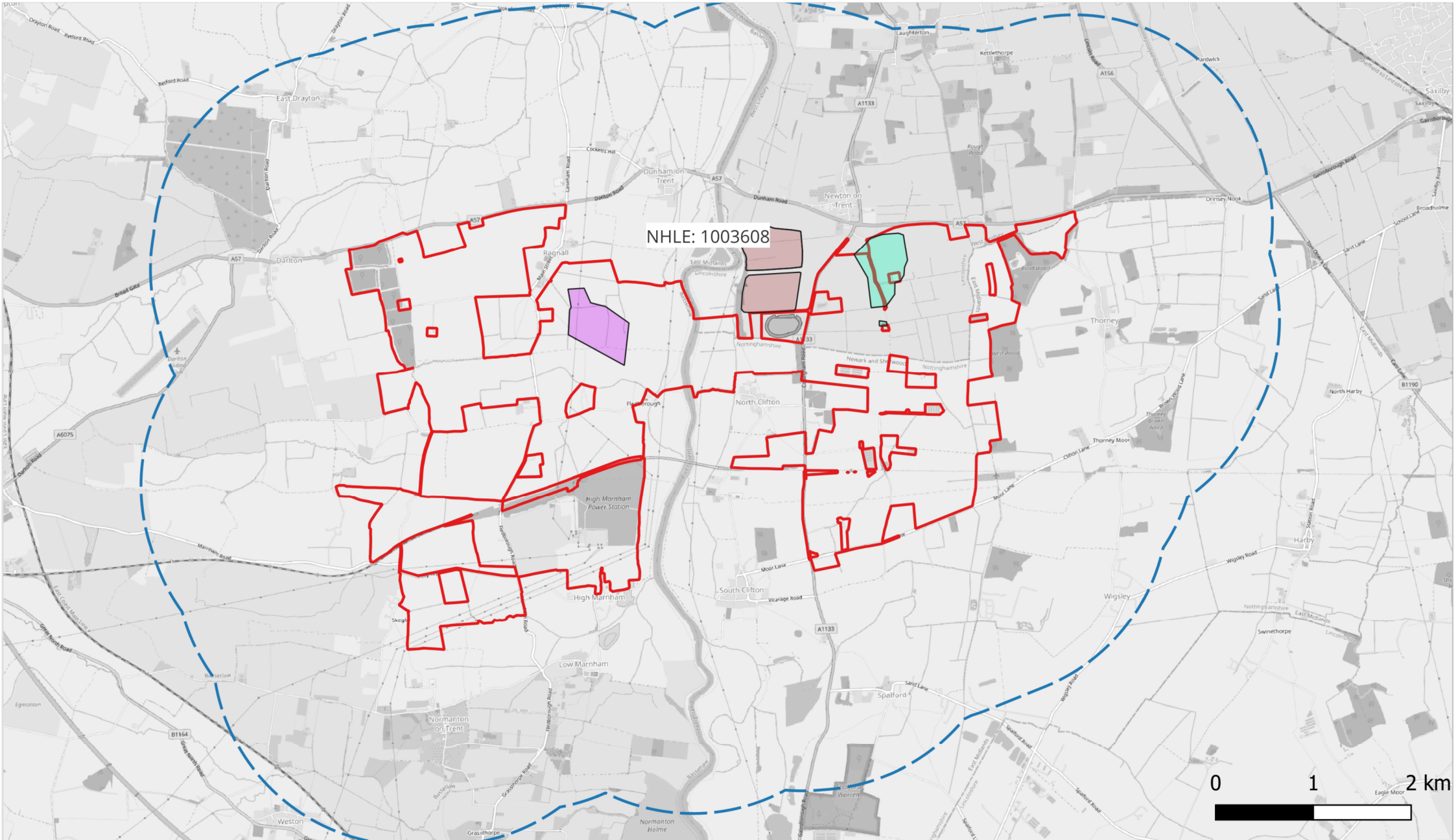
Drawing Number:
EN010159/APP/6.20/9.2

Rev:
01

Drawn Date:
2025-02-26

Legend:

- PH001
- PH002
- 2km Study Area for NDHA
- Order Limits



Client:
One Earth Solar Farm Ltd

Project:
One Earth Solar Farm

Planning Inspectorate Scheme Ref: EN010159
Environmental Statement Volume 2

Drawing Title:
Figure 9.3: Roman Receptors

Drawing Number:
EN010159/APP/6.20/9.3

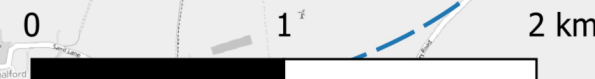
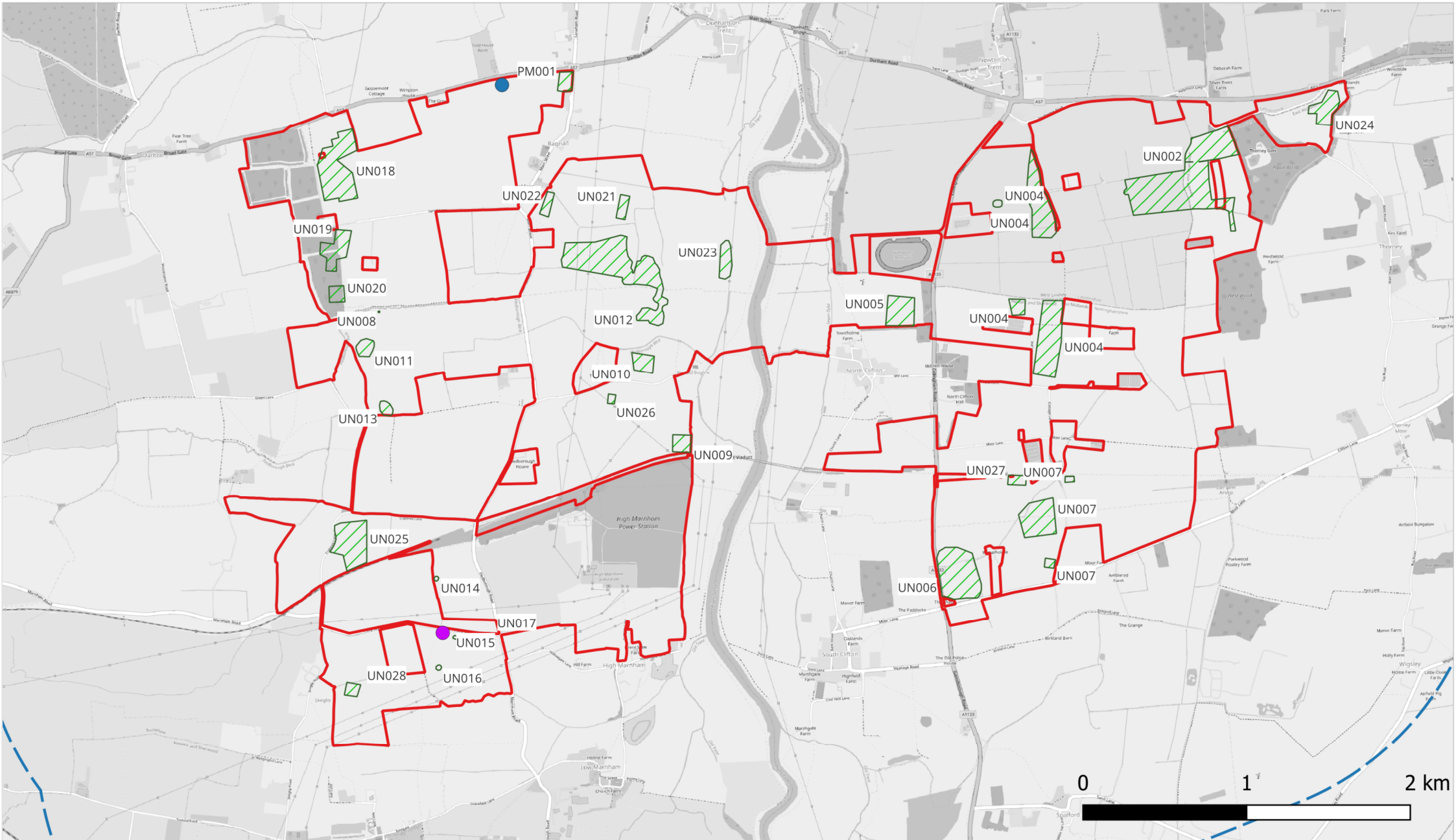
Drawn Date:
2025-02-26

Rev:
01

Legend:

- RO001
- RO003
- RO004
- 2km Study Area for NDHA
- Order Limits





Client:
One Earth Solar Farm Ltd

Project:
One Earth Solar Farm

Planning Inspectorate Scheme Ref: EN010159

Environmental Statement Volume 2

Drawing Title:
Figure 9.5: Post-Medieval and Undated Receptors

Drawing Number:
EN010159/APP/6.20/9.5

Rev:
01

Drawn Date:
2025-02-26

Legend:

- Groups of Undated Receptors
- 2km Study Area for NDHA
- Order Limits
- PM001
- PM002